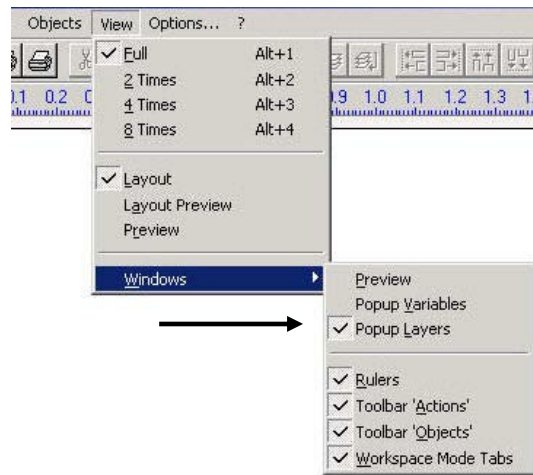


5.9 Two Sided Card Design

A two sided card design is a card design that will print on the front then the printer will flip the card and print the back. Two completely different layouts can be designed for the front and the back of the card. The back can be printed in monochrome black or in full color depending on the ribbon installed and the settings of the print driver.

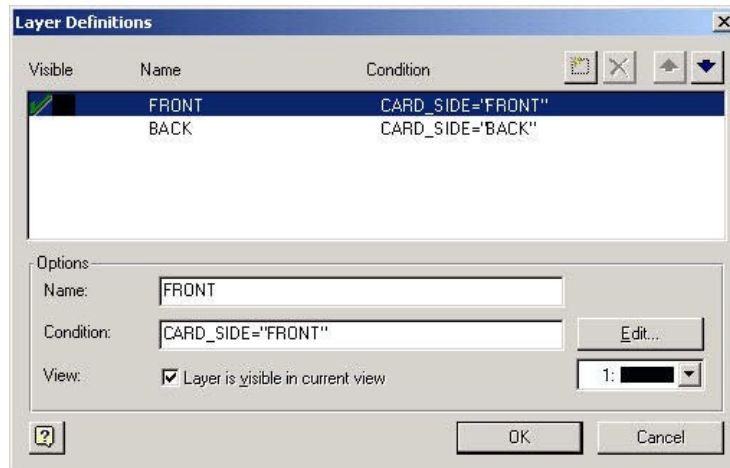
To set a badge layout to print both sides open the badge designer and select the badge layout that will be a two sided design or start a new badge design as described in section 5.1. first ensure the Layers box is visible If it is not visible go to the View menu select Windows and then select Pop Up Layers.



Next right click on the Layers box and select Layer definition.



The Layers Definition box will appear.



Click on Base and change the name to FRONT the set the condition to `CARD_SIDE="FRONT"` then click on First Page and change the name to BACK and set the condition to `CARD_SIDE="BACK"`. Lastly click on Following Pages and delete it. Click the OK button

To work on one view and work on a side double click that side in the Layers box so that a green check mark is visible next to the name and double click the other side so that a red X is visible next to the name. The side with the green check mark is the active layer.

Note: the printer must be a two sided card printer and the print both sides option turned on for two sided printing to work.