

Main Office
415 Route 10 East
Randolph, NJ 07869
Phone: (800) 831-5771
Fax: (973) 537-1420

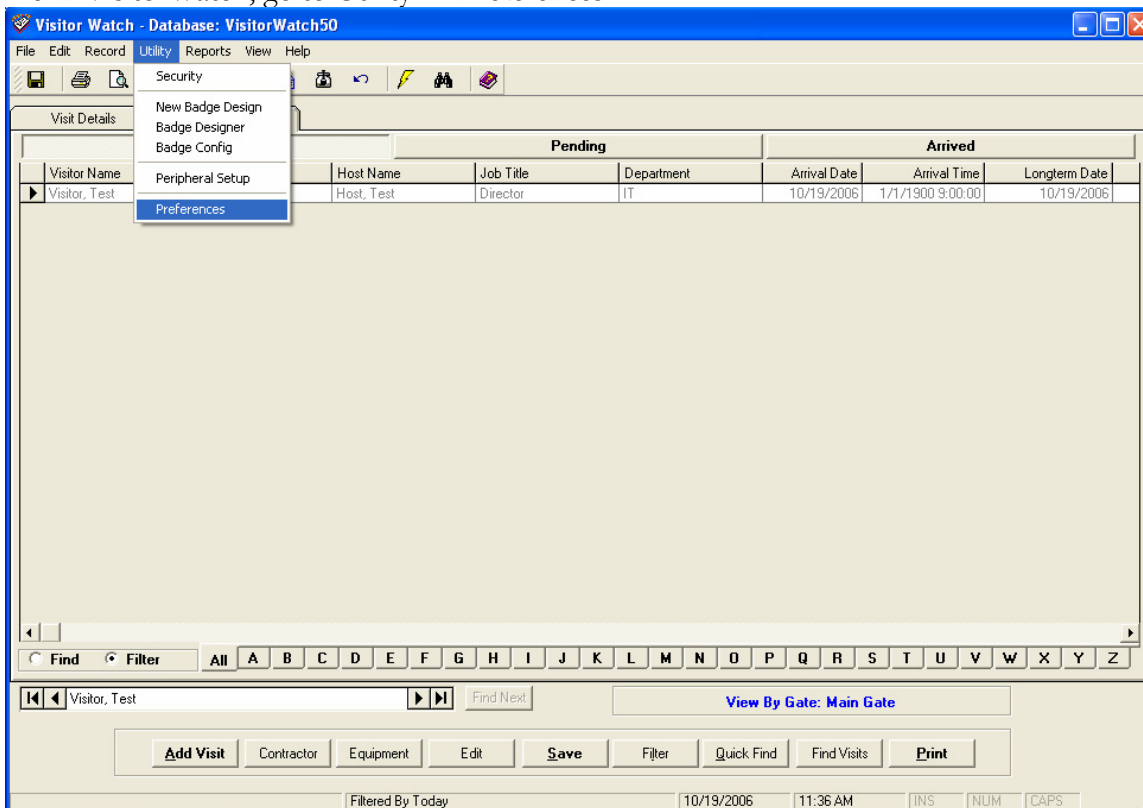
Engineering Group
101 N. Plains Industrial Rd
Wallingford, CT 06492
Phone: (203) 265 - 7022
Fax: (203) 265 - 3588

www.visitorwatch.com
info@visitorwatch.com

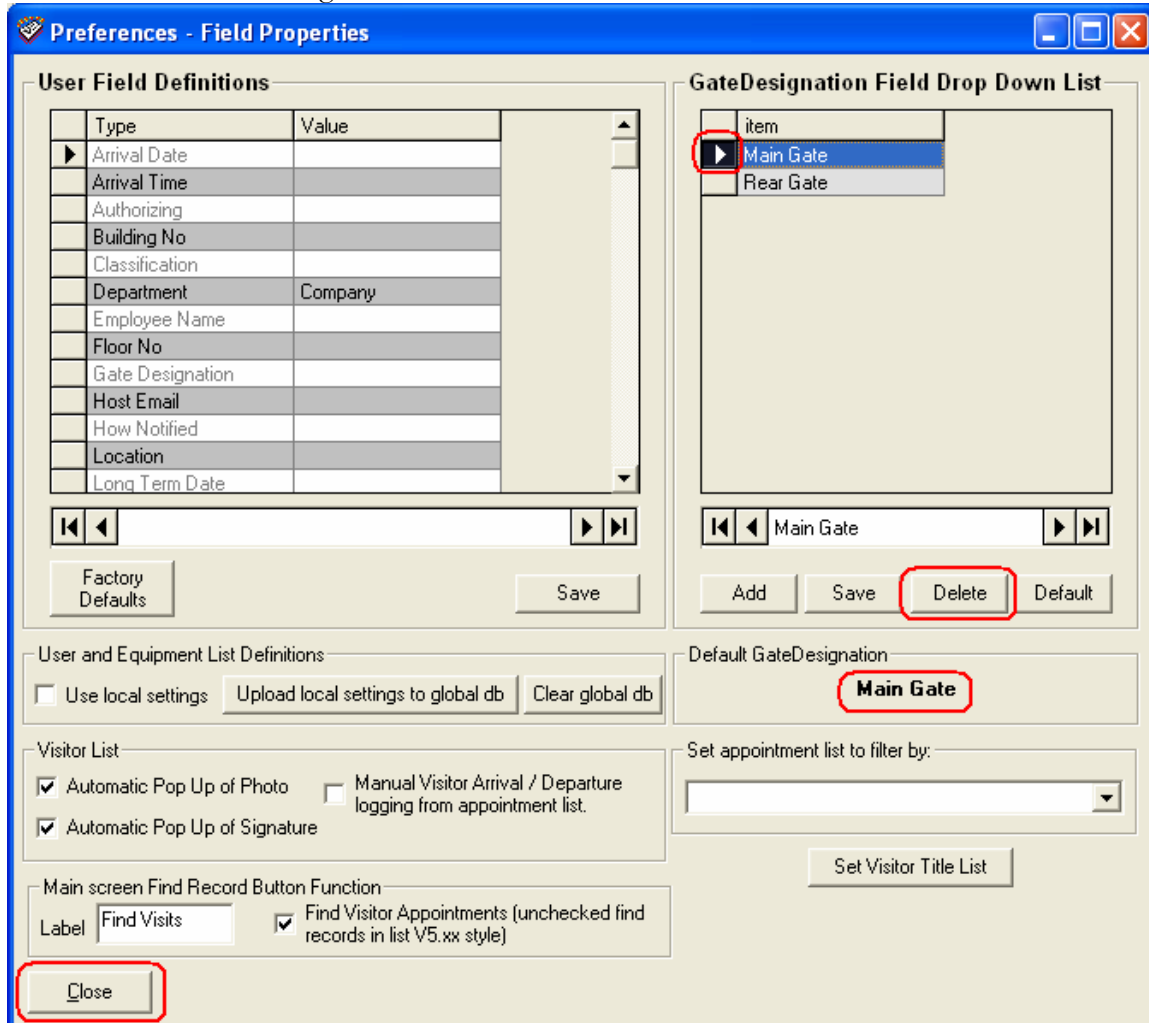


How To Remove a GateDesigner

1. While in VisitorWatch, go to Utility → Preferences



- Click on the Gate you want to delete (make sure that you see the ▶ next to the Gate that you want to delete), then click on delete. Confirm that the GateDesignator that you just deleted is still selected under the Default GateDesignation. Click on Close and exit out of VisitorWatch.



- Confirm that the deleted Gate exists in the Config.vwi file. Browse to C:\Program Files\AllStar\VW6xx\ and open the Config.vwi file in a test editor such as Notepad. Be sure that the deleted Gate is correctly under the UIMAIN & UIFILTER sections.

```
[UIMAIN]
visitorlistfilter = AND GateDesignation = 'Main Gate'
GATEDESIGNATOR=Main Gate
[UIFILTER]
GATEDESIGNATOR=Main Gate
```

- Make sure the web page matches. In the Web.config file under the Misc Settings section find EntryLocation. The value should be set to the deleted GateDesignator.

```
<!-- Misc Settings:
      Entry Location, Visitor Pass Style, Floor, Building, and Notification Type : -->
<add key = "EntryLocation" value ="NY" />
```